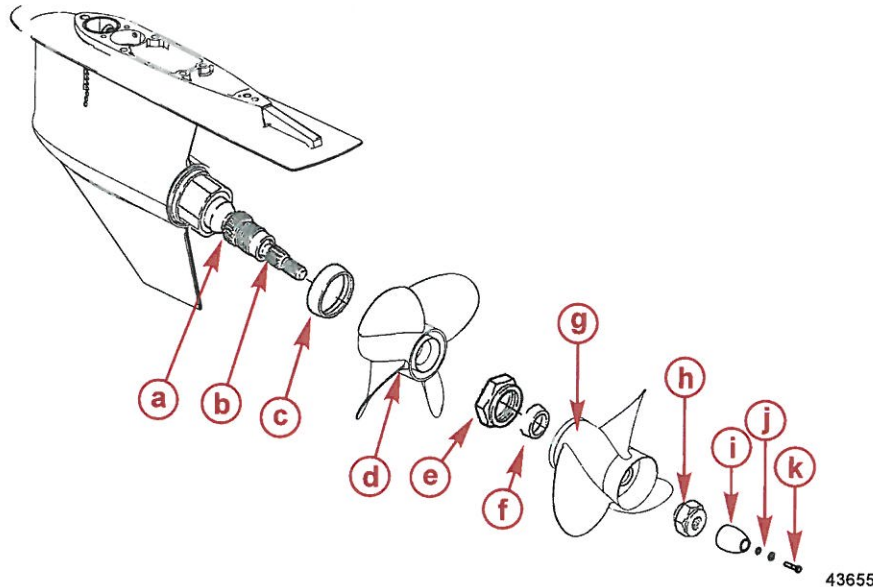


Bravo Three Propeller Installation

IMPORTANT: Mercury Marine Bravo Three propellers are matched sets. Do not operate the drive without a front and rear propeller of the same pitch.

1. Apply a liberal amount of one of the following lubricants to the inner and outer propeller shafts.
2. Slide the forward thrust hub onto the outer propeller shaft with the tapered end of the hub facing aft.
3. Align the splines of the propeller with the splines on the shaft and slide the propeller into place on the outer shaft.
4. Secure it with the forward propeller nut and tighten to the specified torque.
5. Slide the aft thrust hub onto the inner propeller shaft with the tapered end of the hub facing aft.
6. Align the splines of the propeller with the splines on the shaft and slide the propeller into place on the inner shaft.
7. Secure it with the aft propeller nut and tighten to the specified torque.



- a - Outer propeller shaft
- b - Inner propeller shaft
- c - Forward thrust hub
- d - Forward propeller
- e - Forward propeller nut
- f - Aft thrust hub
- g - Aft propeller
- h - Aft propeller nut
- i - Anode
- j - Washers
- k - Screw

Tube Ref No.	Description	Where Used	Part No.
34	Special Lubricant 101	Propeller shaft splines	92-802865Q02
94	Anti-Corrosion Grease	Propeller shaft splines	92-802867Q 1
95	2-4-C with Teflon	Propeller shaft splines	92-802859A 1

Description	Nm	lb-in.	lb-ft
Forward propeller nut	136		100
Aft propeller nut	81		60