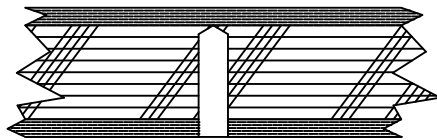


**SUGGESTED INSTALLATION FOR A LADDER WITHOUT FLANGES
INTENDED FOR 1/4-20 THROUGH BOLT INSTALLATION
ON A PLYWOOD CORED TRANSOM**

STEP 1

DRILL 5/16" HOLE THROUGH
OUTER SKIN AND CORE
BUT NOT THROUGH INR SKIN

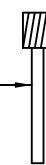
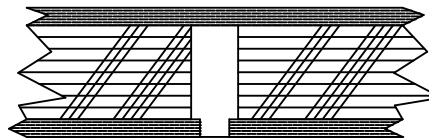


5/16" TWIST DRILL

5/16" CUTTER WITH 1/8" SHANK
DREMEL 115
ACE HARDWARE 22718
HOME DEPOT 941919

STEP 2

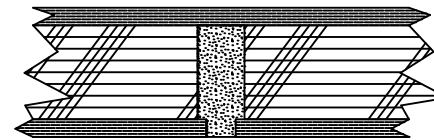
UNDERCUT CORE MATERIAL
DO NOT START CUTTER UNTIL
THROUGH OUTER SKIN



MASKING TAPE TO KEEP
EPOXY/FILLER MIX
INPLACE DURING CURE
GLUE SYRINGE WEST 807-2

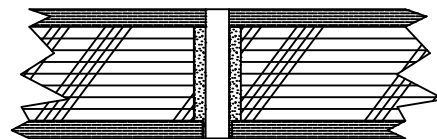
STEP 3

USE GLUE SYRINGE TO FILL
THE CAVITY WITH AN EPOXY
AND HIGH DENSITY FILLER



STEP 4

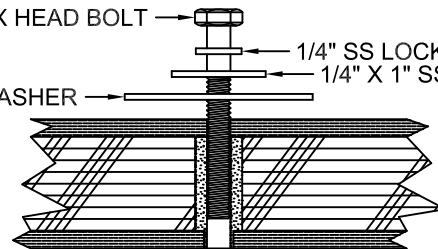
DRILL 1/4" HOLE THROUGH
BOTH SKINS AND CORE



1/4" TWIST DRILL

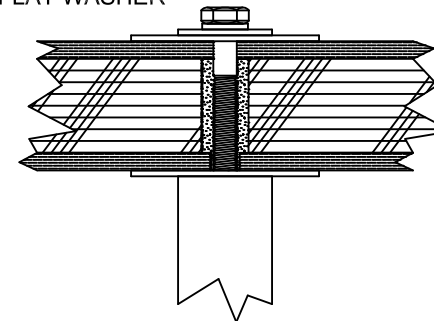
STEP 5

ASSEMBLE AS SHOWN
SEAL WITH MARINE GRADE SEALANT
LOCKTITE SCREW TO LADDER



STEP 1

AFTER ALL SCREWS ARE
STARTED IN LADDER LIGHTLY
TIGHTEN TO FINAL TORQUE



FOR A STRONGER INSTALATION EPOXY 1/4" THICK FIBERGLASS
BACKING PLATES TO BOTH SKINS UNDER THE 2" WASHERS
USE A 3" HOLE SAW TO MAKE THE BACKING PLATES FROM
1/4" THICK FIBERGLASS SHEET